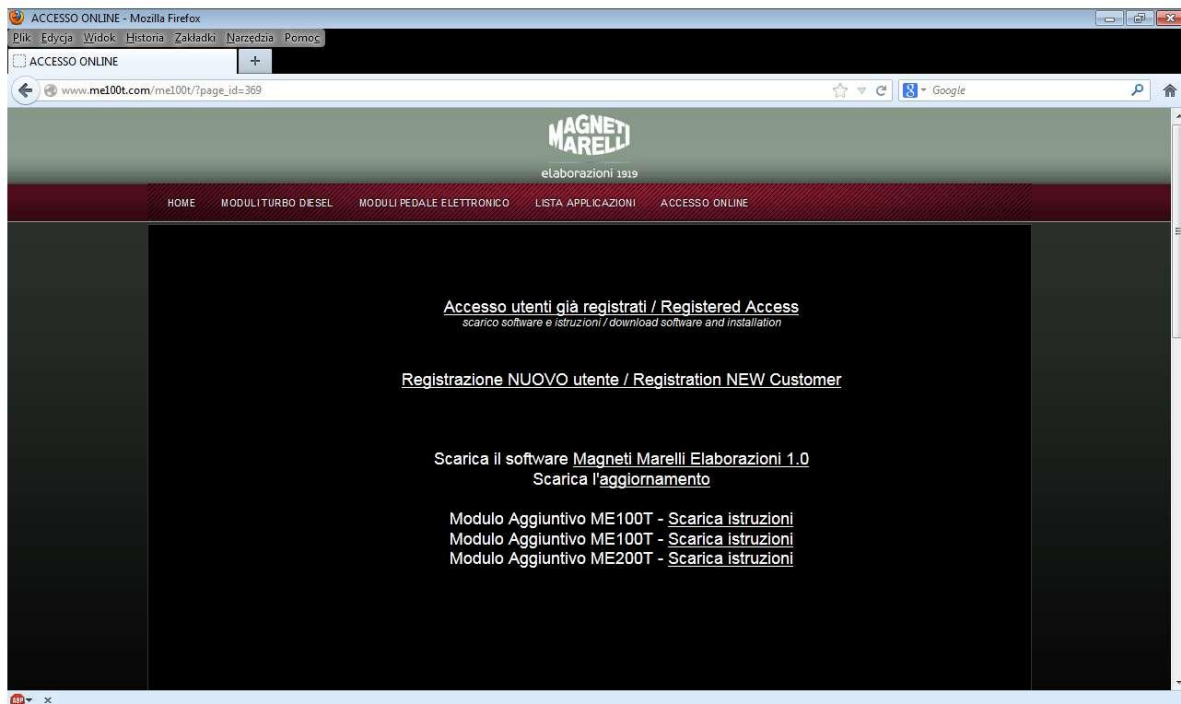


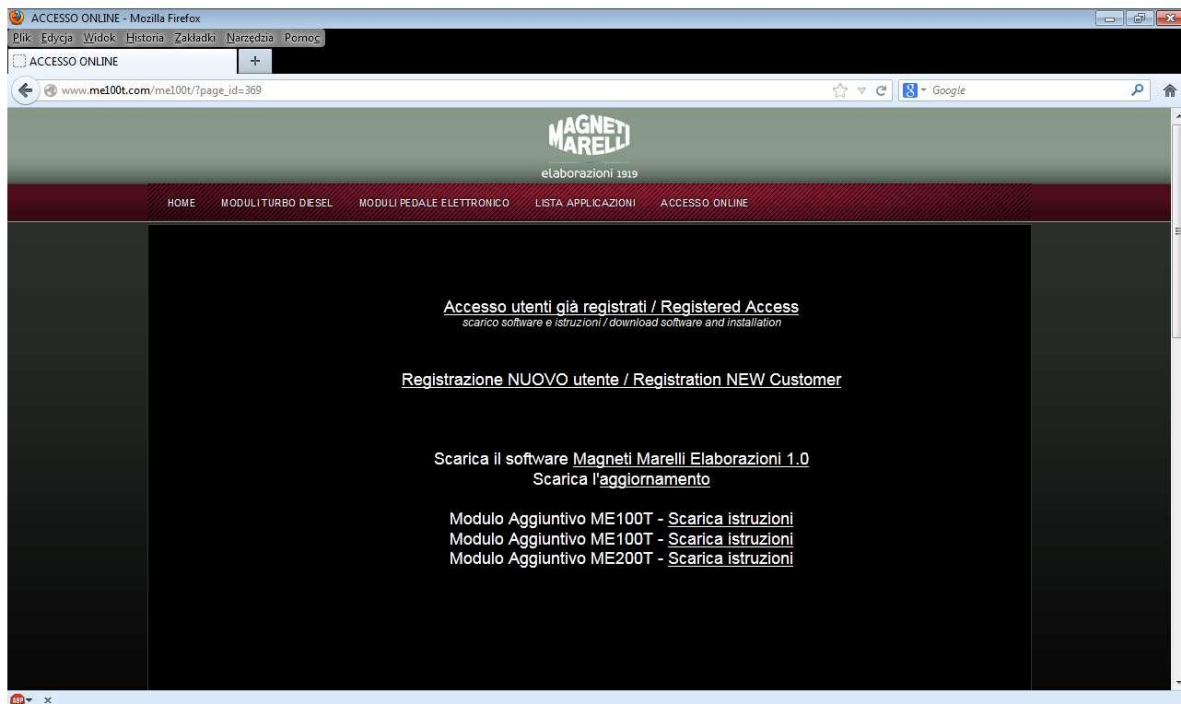
1. Register on the following website:

www.me100t.com



2. Install the Magnet Marelli Elaborazioni 1 software, activating it directly on

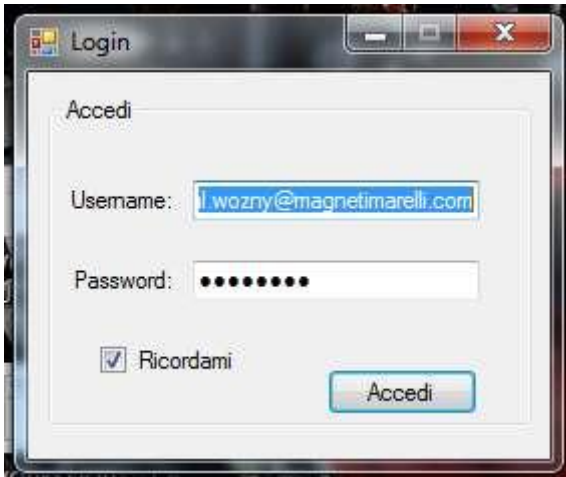
www.me100t.com



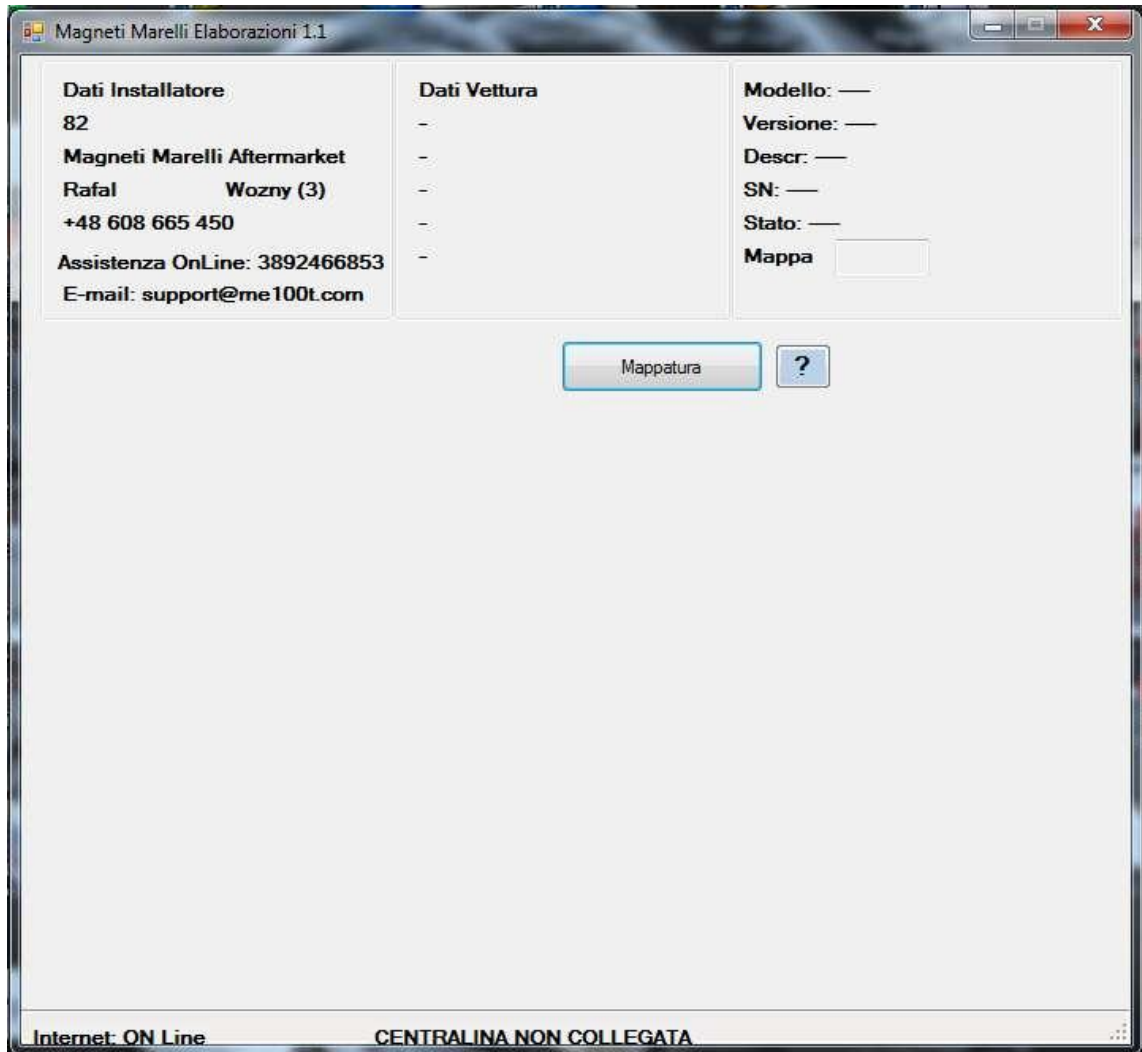
3. Start the Magneti Marelli Elaborazioni application (the PC must be permanently connected to the Internet and the module linked with the same PC, using a USB cable).



4. Log in, using the data sent by the administrator (it is required to fill in the form on www.me100t.com – see item 1 – to receive the data).



5. Press the *Mappatura* button to select the model of a car, in which we wish to install the module. The module has been correctly connected to the PC, when identification data appears in the top right corner of the application's screen.



- Select a correct car model and type of engine, based on the capacity, rated power and engine code (if applicable). Then, press the *Download File* button located on the left side of the screen, in the appropriate line for the selected model.

Magneti Marelli Elaborazioni 1.1

Dati Installatore 82 Magneti Marelli Aftermarket Rafal Wozny (3) +48 608 665 450 Assistenza OnLine: 3892466853 E-mail: support@me100t.com	Dati Vettura - - - - -	Modello: — Versione: — Descr: — SN: — Stato: — Mappa <input type="text"/>
--	--	--

Marca Auto: FORD Modello Auto: GALAXY

Allestimento

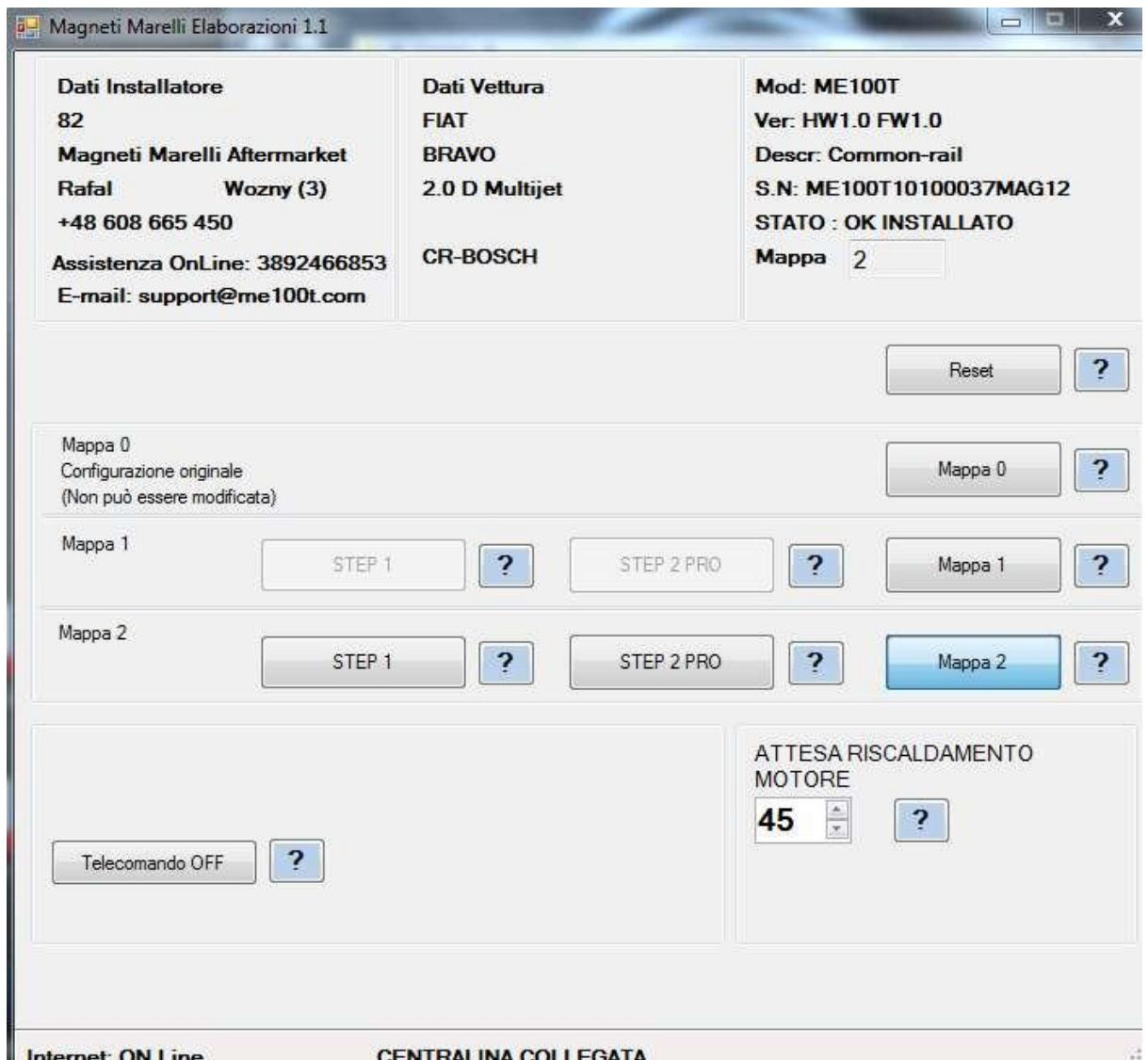
do	NomeVersione	Cavalli/Hp	CodiceMotore	Alimentazione	Centralina	Cablaggio
▶ <input type="button" value="load File"/>	1.8 TDCi	100	FFWA	CR-SIEMENS	ME100T	ME103SCR
<input type="button" value="load File"/>	2.0 TDCi	115	KLWA - TYWA	CR-SIEMENS	ME100T	ME103SCR
<input type="button" value="load File"/>	2.0 TDCi	130	AZWA	CR-SIEMENS	ME100T	ME103SCR
<input type="button" value="load File"/>	2.0 TDCi	140	QXWB	CR-SIEMENS	ME100T	ME103SCR
<input type="button" value="load File"/>	2.2 TDCi	175	Q4BA	CR-SIEMENS	ME100T	ME103SCR

Internet: ON Line CENTRALINA NON COLLEGATA

7. Configure parameters for specific settings.

Press the *Mappa X* button to activate a particular application. This rule is not applicable, if you have the ME300T remote controller, as it can be used to switch applications, when the module has been installed in the car.

The remote controller (if we have one) is coded with the number provided on its enclosure (a small sticker) or inside the motherboard. The number must be entered in the field that appears after switching the Telecomando status (ON/OFF).



When the software has been installed, we can optionally use the settings recommended by Magneti Marelli to modify the software, acting on own responsibility. The available options are STEP 1 (general modification) and STEP 2 PRO (selective adjustment).

STEP 1

The screenshot displays the 'Magneti Marelli Elaborazioni 1.1' software interface. It is divided into several sections:

- Dati Installatore:** 82, Magneti Marelli Aftermarket, Rafal Wozny (3), +48 608 665 450, Assistenza OnLine: 3892466853, E-mail: support@me100t.com
- Dati Vettura:** FIAT BRAVO 2.0 D Multijet CR-BOSCH
- Mod: ME100T**
Ver: HW1.0 FW1.0
Descr: Common-rail
S.N: ME100T10100037MAG12
STATO : OK INSTALLATO
Mappa 2

Below the data fields are 'Reset' and '?' buttons. The main area features a bar chart titled 'Modello ME100T' with a y-axis labeled 'Valori' ranging from -100 to 100. The x-axis categories are Gain, Bassi, Medi, and Alti. The bars show values of approximately 30 for Gain, -20 for Bassi, and 10 for Medi. To the right of the chart is a '% TOTALE' section with a value of 0 and a '?' button. An 'Indietro' button is located at the bottom right.

Category	Value
Gain	30
Bassi	-20
Medi	10
Alti	0

STEP 2 PRO

The step enables the changing of parameters, in 3 engine load ranges.

ALTI = HIGH, 70-100%

MEDI = AVERAGE, 30-70%

BASS = LOW, 0-30%

LIMITE PRESSIONE RAIL = PRESSURE LIMITS FOR THE COMMON RAIL SYSTEM

Press the *Indietro* button to save the settings.

Dati Installatore
82
Magnetit Marelli Aftermarket
Rafal Wozny (3)
+48 608 665 450
Assistenza OnLine: 3892466853
E-mail: support@me100t.com

Dati Vettura
FIAT
BRAVO
2.0 D Multijet
CR-BOSCH

Mod: ME100T
Ver: HW1.0 FW1.0
Descr: Common-rail
S.N: ME100T10100037MAG12
STATO : OK INSTALLATO
Mappa 2

Reset ?

% ALTI
0 ?

% MEDI
10 ?

% BASSI
20 ?

% GAIN
30 ?

Modello ME100T

Valori

Gain Bassi Medi Alti

PRESSIONE RAIL
41 ?

LIMITE PRESSIONE RAIL
50 ?

Indietro

!!! IMPORTANT!

Magnetit Marelli Aftermarket Parts & Services S.p.A. would like to remind you that the additional control box is intended for **HIHG-PERFORMANCE** purposes, exclusively. Therefore, it can be used on racetracks, private tracks or on selected roads that are inaccessible to traffic.

Magnetit Marelli Aftermarket Parts & Services S.p.A. shall not be responsible for improper use of the device. The user is always responsible to observe the Highway Code and binding regulations.

Magnetit Marelli Aftermarket Parts & Services S.p.A. shall not be responsible for any potential damage caused by the car, resulting from faults of the product or an incorrect installation of the afore-mentioned products.